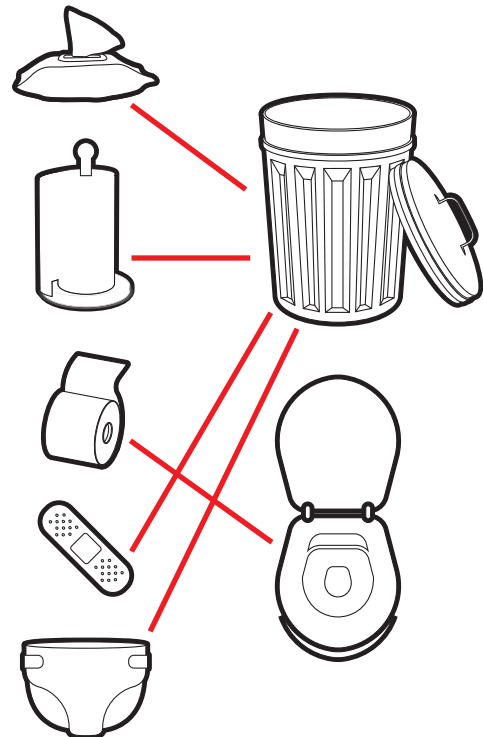
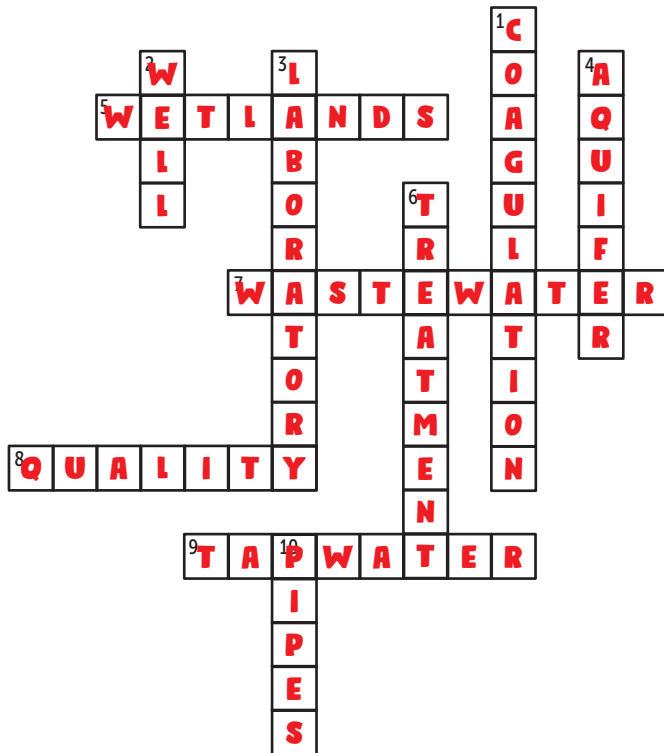
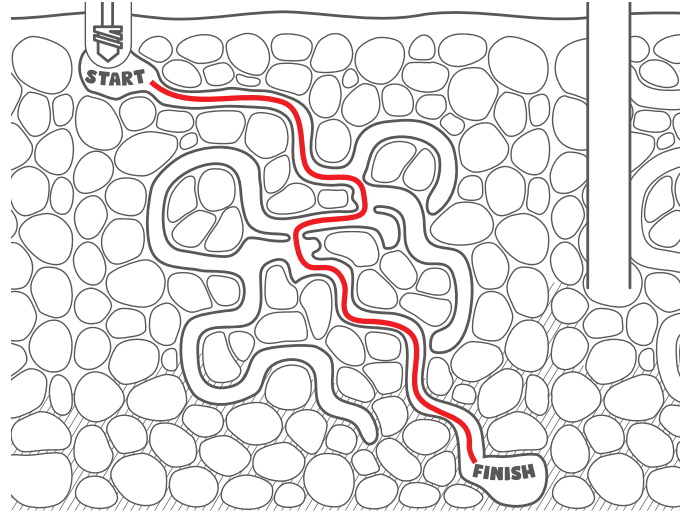
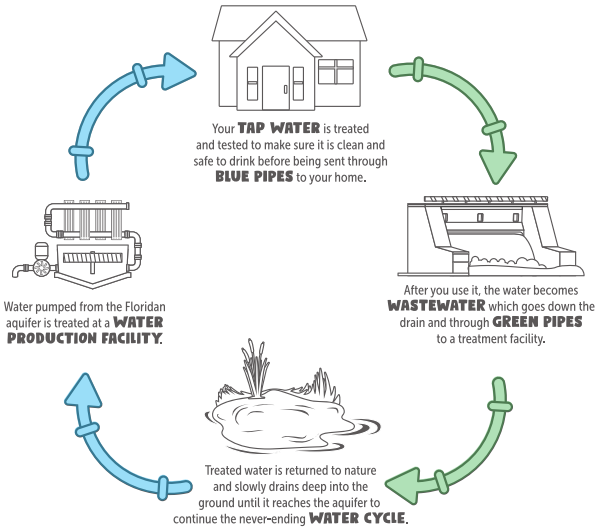
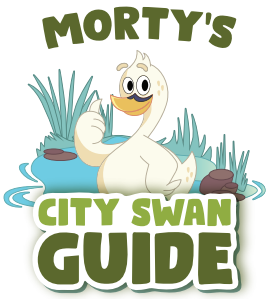


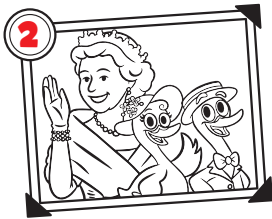


# ANSWER KEY





# ANSWER KEY



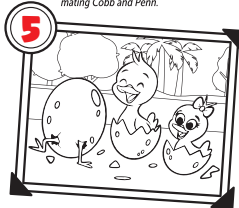
The Queen chooses the perfect mating Cobb and Penn.



The Pickhart family writes a letter to the Queen of England.



Lady and Sir arrive on Lake Morton.



A new generation of swans is born in Lakeland.



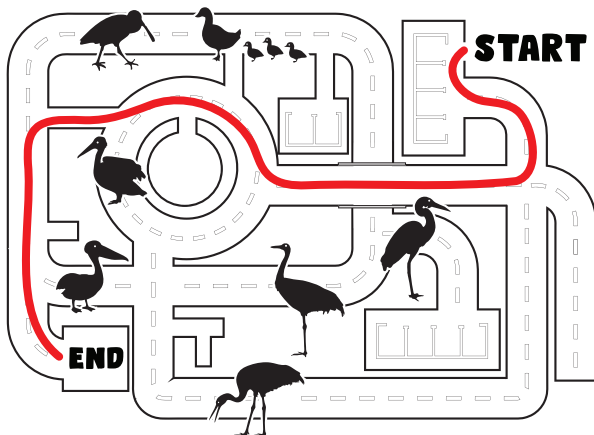
Lady and Sir board a plane to Lakeland.

- ① RCON **C O R N**
- ② TAOS **O A T S**
- ③ SPRE **P E A S**
- ④ EDSER **S E E D S**
- ⑤ ENSEGR **G R E E N S**

WHAT IS THE NUMBER 1 THREAT TO SWANS IN FLORIDA?

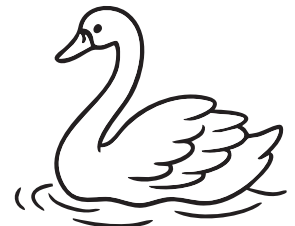
**R O A D S**

① ② ③ ④ ⑤



**CAN YOU COUNT**  
all the swans in this picture?

**10 SWANS**



LakelandGov.net/LearningLakeland

# ANSWER KEY



This is a big red, octagon with white letters that tells cars, bikes, and people to STOP! If you see this sign, always stop, look both ways, and make sure it's safe before crossing!



This is a big orange triangle that tells everyone that workers are fixing or building roads. If you see one, watch for cones, trucks, and workers.



This is a red and white triangle that tells cars and bikes to slow down and let others go first. If you see a yield sign, look around, wait for cars or people walking, and go only when it's safe.



This is a black and white sign with a bicycle on it. It tells drivers to share the road with bicycles.



This is a blue sign with a big H on it. It tells people where to find a hospital in case someone is sick or hurt.

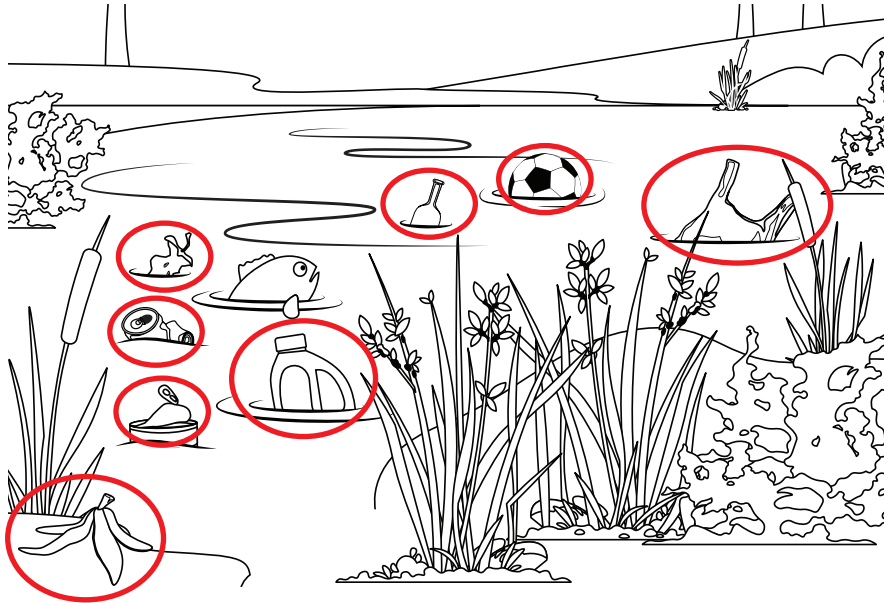


This is a special sign that tells drivers to watch out for people walking. It can be bright yellow or fluorescent green with a picture of a person walking. If you see this sign, it means there's a crosswalk nearby.



ACTIVITY BOOK

# ANSWER KEY





# ANSWER KEY

