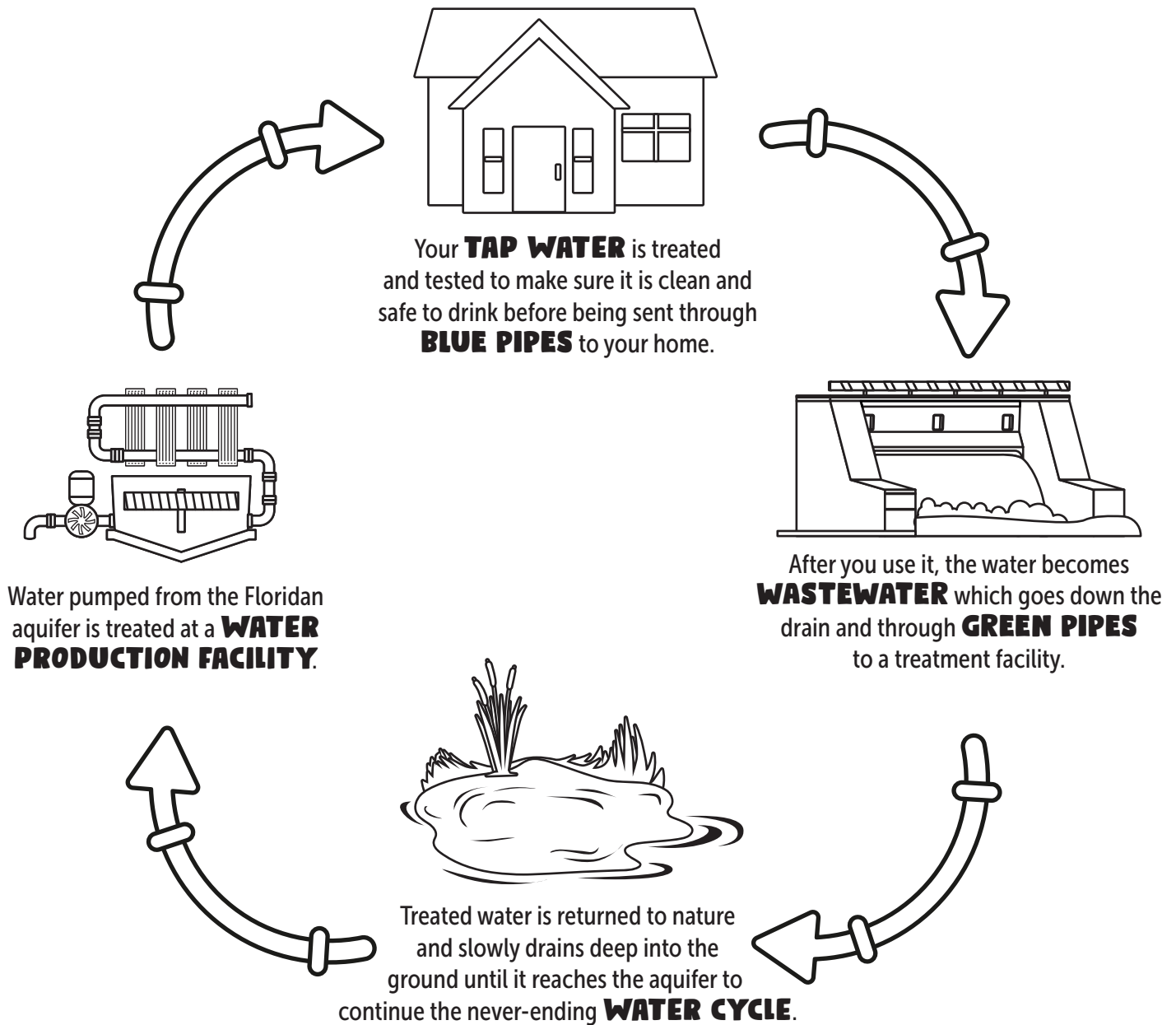


OLLIE'S



CITY WATER GUIDE

WHERE DOES LAKELAND'S DRINKING WATER COME FROM?



COLOR THE PIPES

This diagram shows how water travels to and from your home.

Color the clean water pipes BLUE.

These bring fresh water to your home.

Color the wastewater pipes GREEN.

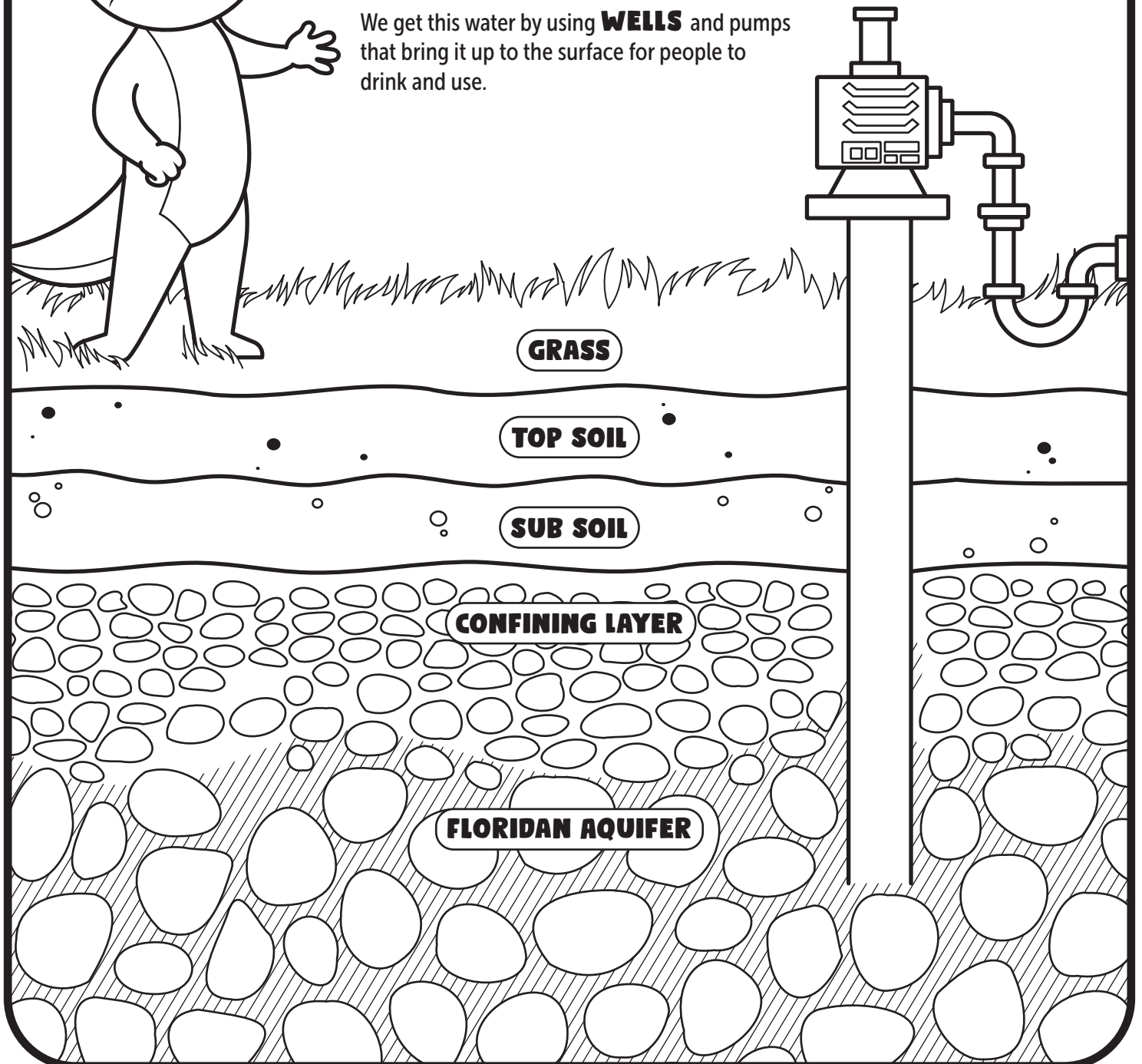
These carry wastewater away to be cleaned.

WHAT IS THE FLORIDAN AQUIFER?



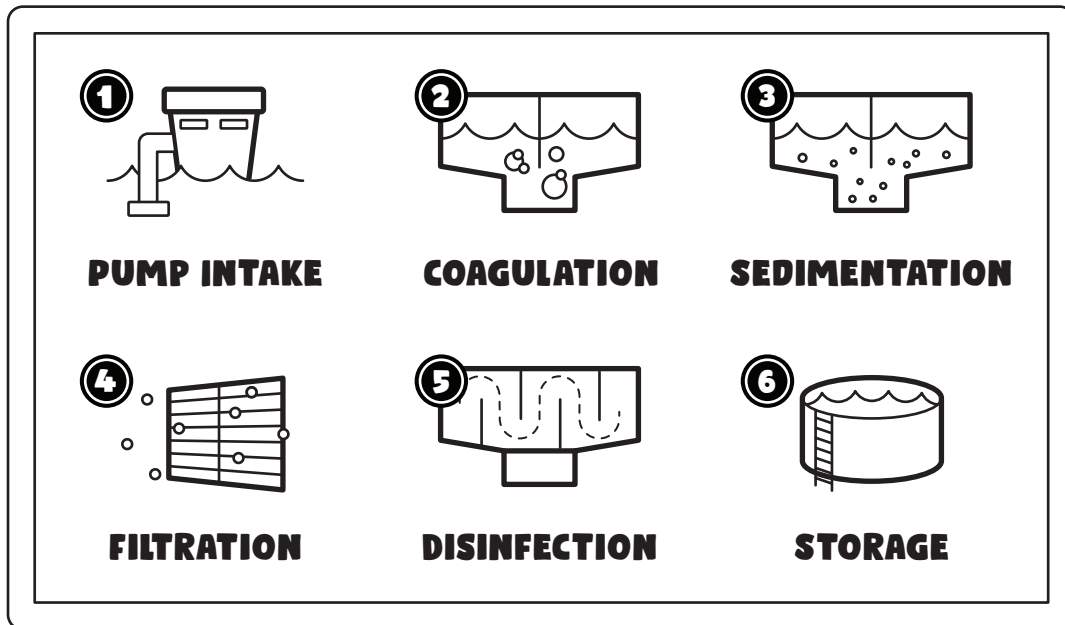
The **FLORIDAN AQUIFER** is a layer of rock or sand underground that holds water. In Florida, it's mostly made of **LIMESTONE**.

We get this water by using **WELLS** and pumps that bring it up to the surface for people to drink and use.



WATER TREATMENT PROCESS

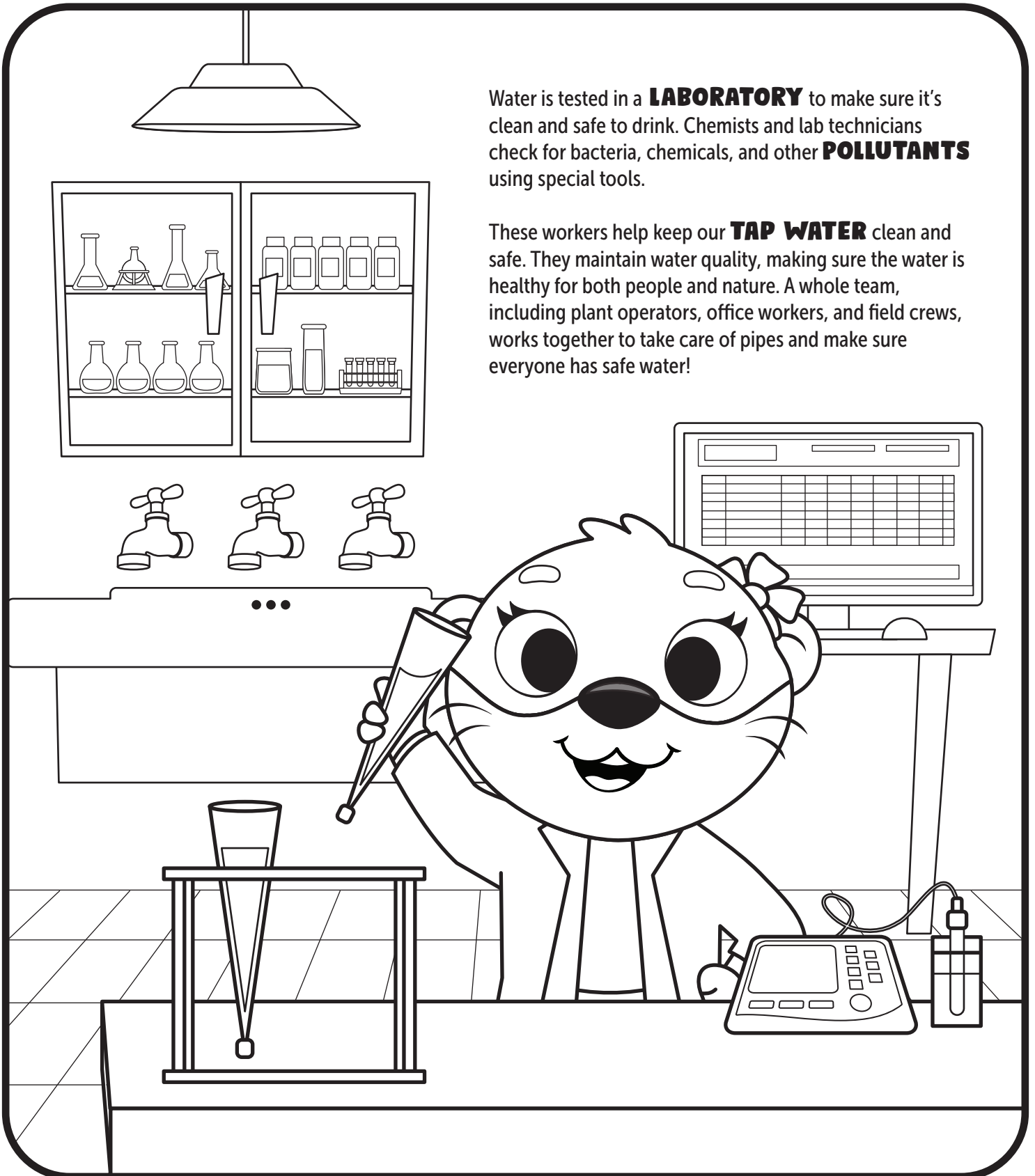
WATER TREATMENT is the process that cleans and treats water so it's safe to drink! The process begins by drilling a well and pumping water from the Floridan aquifer. Then, coagulation and sedimentation remove large particles and filtration removes tiny particles. Finally, disinfectants like chlorine make the germs disappear, leaving safe, tap-ready water.



WHY DO WE TEST THE WATER?

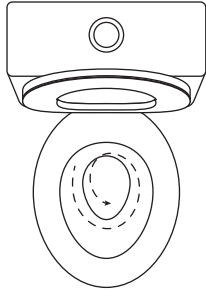
Water is tested in a **LABORATORY** to make sure it's clean and safe to drink. Chemists and lab technicians check for bacteria, chemicals, and other **POLLUTANTS** using special tools.

These workers help keep our **TAP WATER** clean and safe. They maintain water quality, making sure the water is healthy for both people and nature. A whole team, including plant operators, office workers, and field crews, works together to take care of pipes and make sure everyone has safe water!



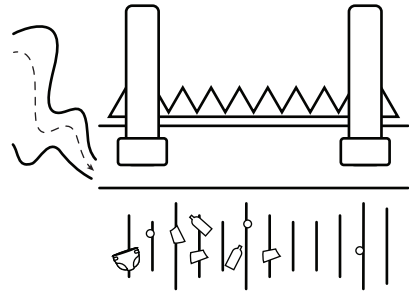
HOW DO WE CLEAN WASTEWATER?

1



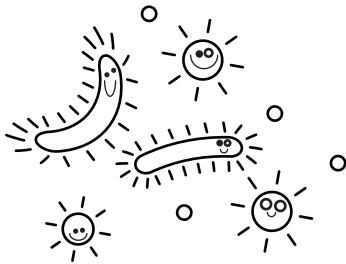
Water that goes down the drain or is flushed becomes wastewater and travels to the wastewater treatment facility.

2



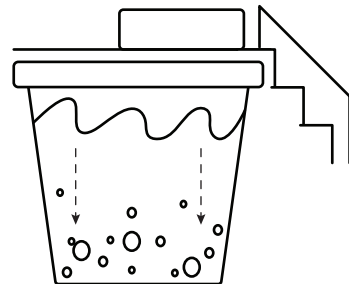
A giant strainer separates items that don't belong such as diapers, bottles, and wipes from the wastewater.

3



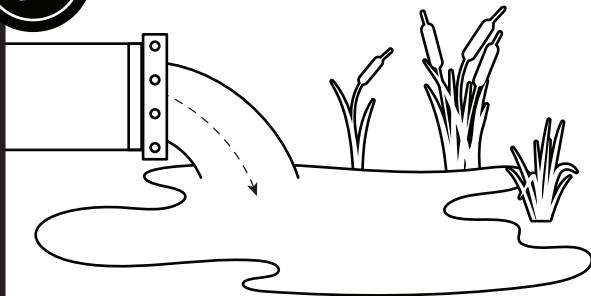
Next, the wastewater passes through a special tank. This tank introduces air into the mix, so that good bacteria can eat the waste, breaking it down.

4



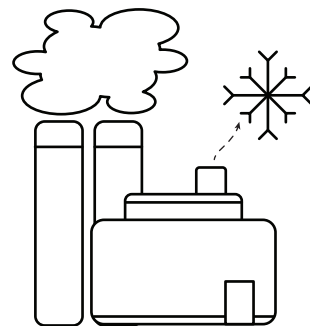
The wastewater moves into big tanks where solids sink to the bottom.

5



The wastewater gets disinfected and is sent to Se7en Wetlands for a final natural treatment process.

6

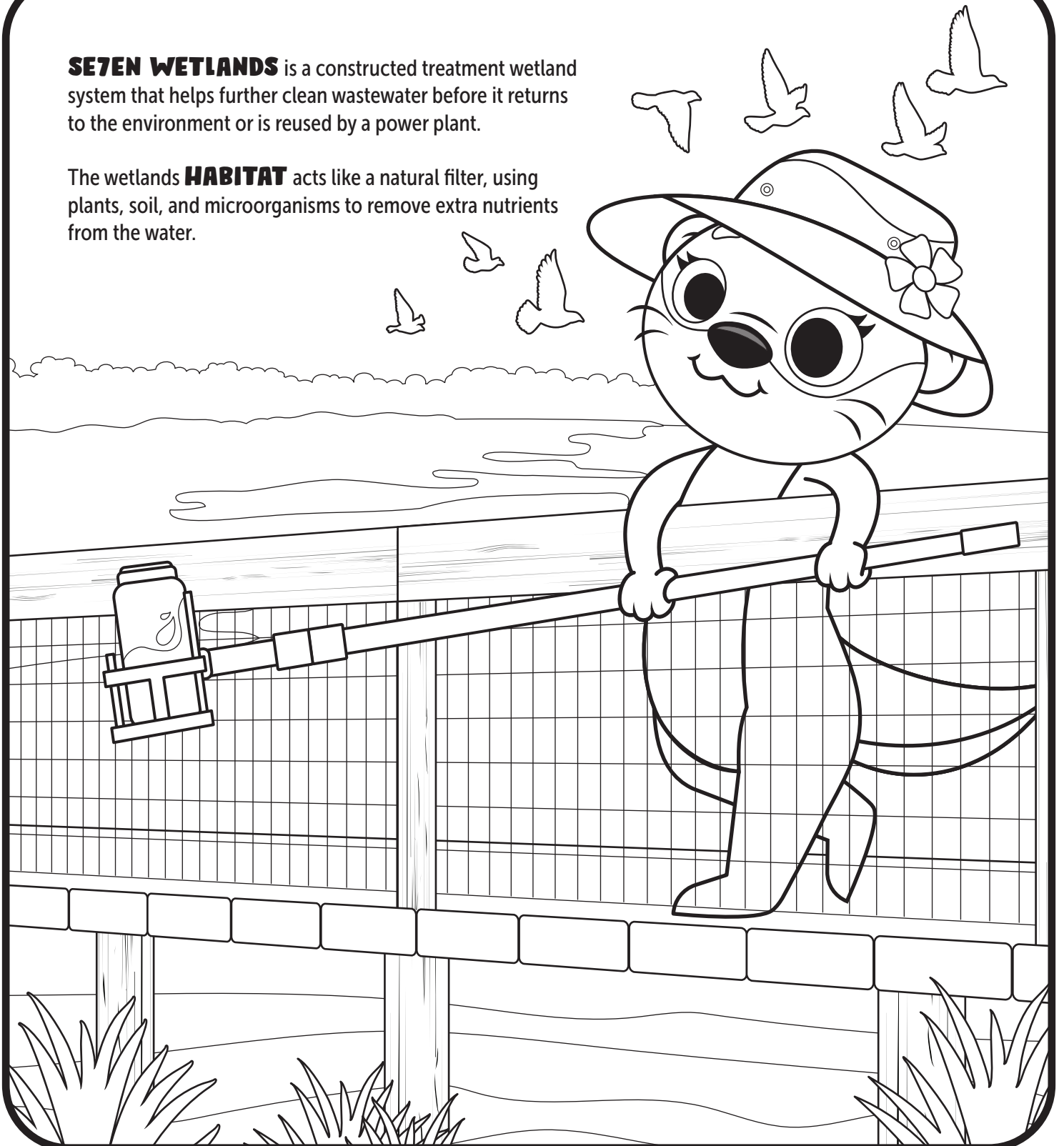


Some of the treated wastewater also gets reused to cool down a power plant.

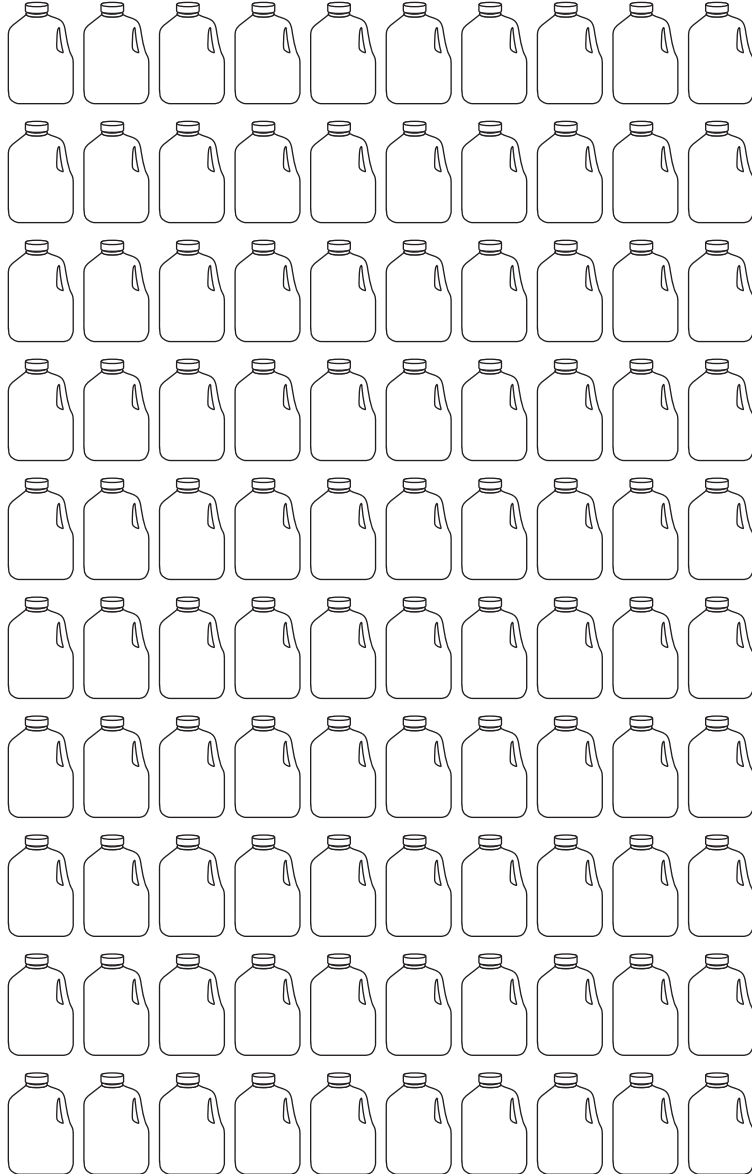
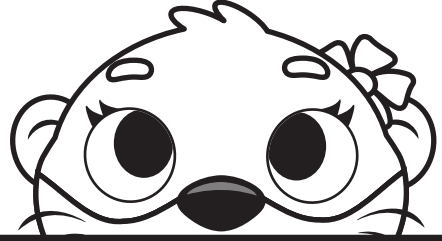
WHAT IS SE7EN WETLANDS?

SE7EN WETLANDS is a constructed treatment wetland system that helps further clean wastewater before it returns to the environment or is reused by a power plant.

The wetlands **HABITAT** acts like a natural filter, using plants, soil, and microorganisms to remove extra nutrients from the water.



HOW MUCH WATER DO I USE IN A DAY?



Color and count the water gallons to find out how many you use in a day.

2 GALLONS
BRUSHING TEETH

12 GALLONS
DISHWASHER

25 GALLONS
SHOWER

36 GALLONS
BATH

2 GALLONS
WASHING HANDS

2 GALLONS
FLUSHING TOILET

40 GALLONS
WASHING CLOTHES

1 GALLON
DRINKING & COOKING

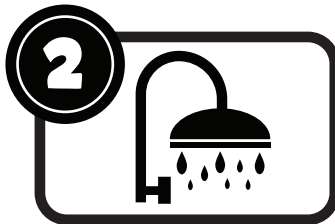
OOPS! OUT OF GALLONS?

That means you're using more water than you should. Don't worry—check out the tips below for easy ways to save water.



TURN OFF THE TAP

When you brush your teeth, you can save water by switching off the faucet until it's time to rinse.



KEEP SHOWERS SHORT

Save water by switching off the faucet until it's time to rinse.



REUSE RAINWATER

Collect rain in a rain barrel and use it to water plants.

WHAT IF WE RUN OUT OF WATER?

Imagine the Floridan aquifer is like a giant underground water tank. If we use too much water, the water level gets lower and lower.

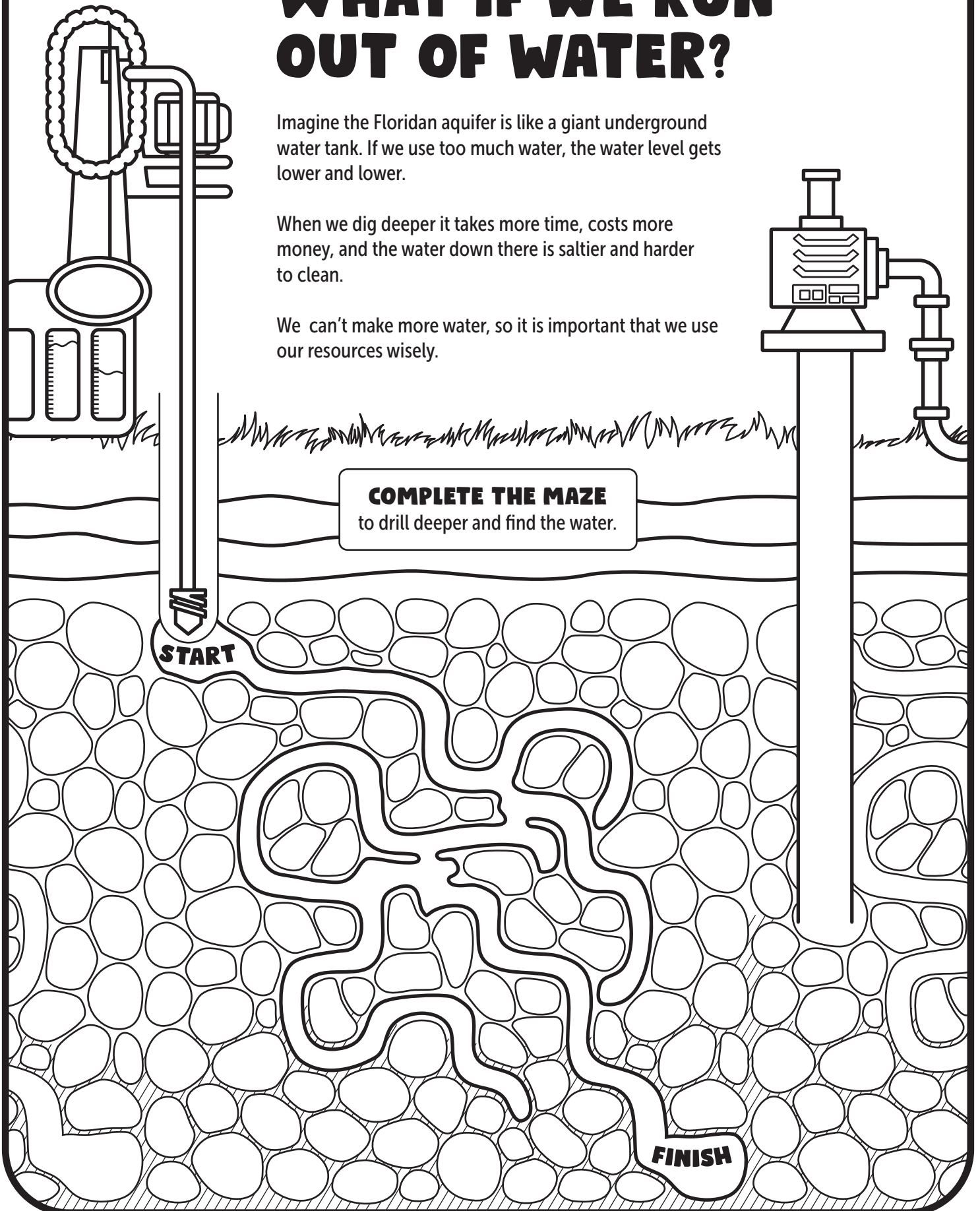
When we dig deeper it takes more time, costs more money, and the water down there is saltier and harder to clean.

We can't make more water, so it is important that we use our resources wisely.

COMPLETE THE MAZE
to drill deeper and find the water.

START

FINISH



WATER IS THE WORD!

Complete the crossword puzzle
to test your water knowledge.

ACROSS

5. SEVEN _____ helps to clean wastewater
before it returns to the environment.

7. After we use water in sinks, toilets, and
showers, it becomes _____ and is
cleaned before being returned to
the environment.

8. Lab technicians and chemists test drinking
water to make sure it is clean and safe.
This is called checking the water _____.

9. The water that comes out of your sink or
faucet is called _____.

DOWN

1. _____ is the process that makes small particles
stick together so they can be removed.

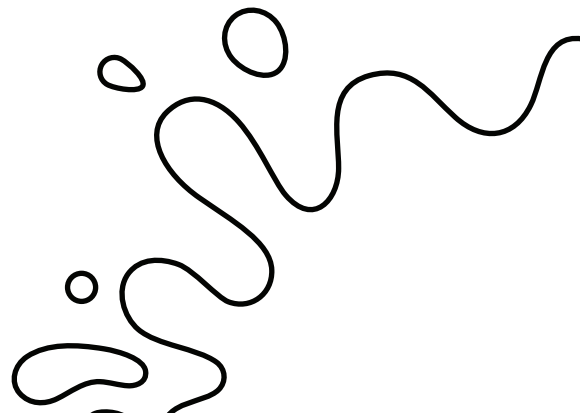
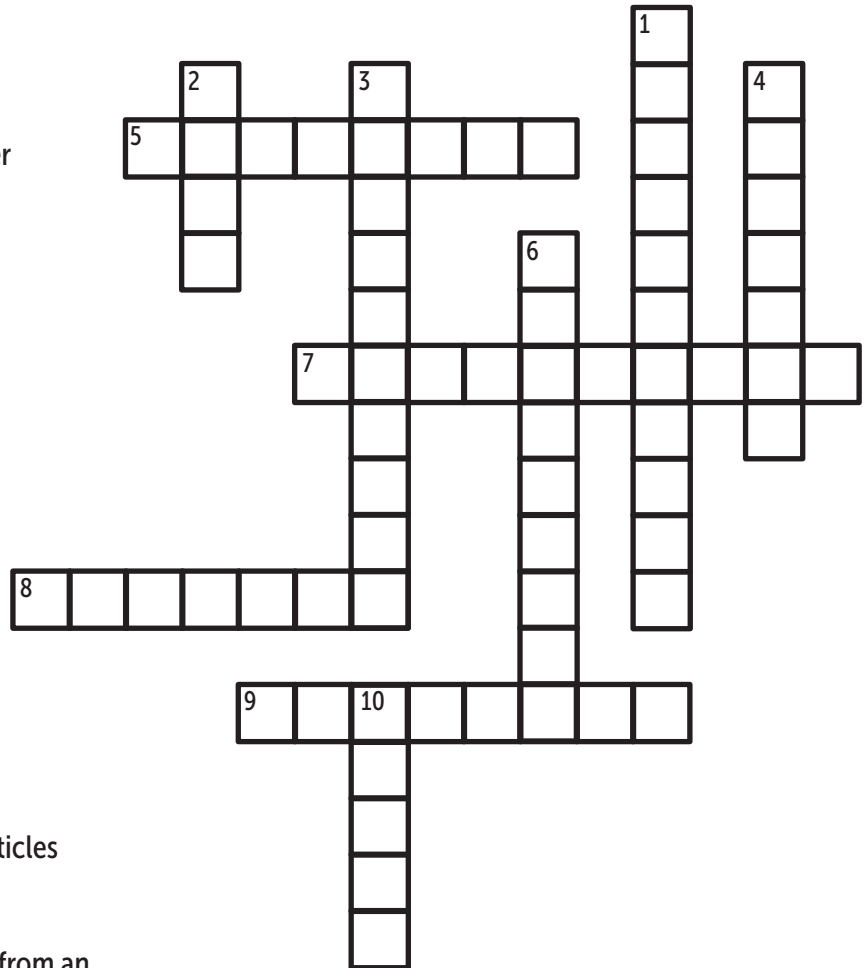
2. A deep hole dug into the ground to get water from an
underground source is called a _____.

3. Scientists test water samples in a _____ to make sure it is safe to drink.

4. Lakeland gets its drinking water from an underground source called an _____.

6. Before water comes to our homes, it is cleaned at a water _____ plant.

10. Clean water travels underground to homes and schools through _____.

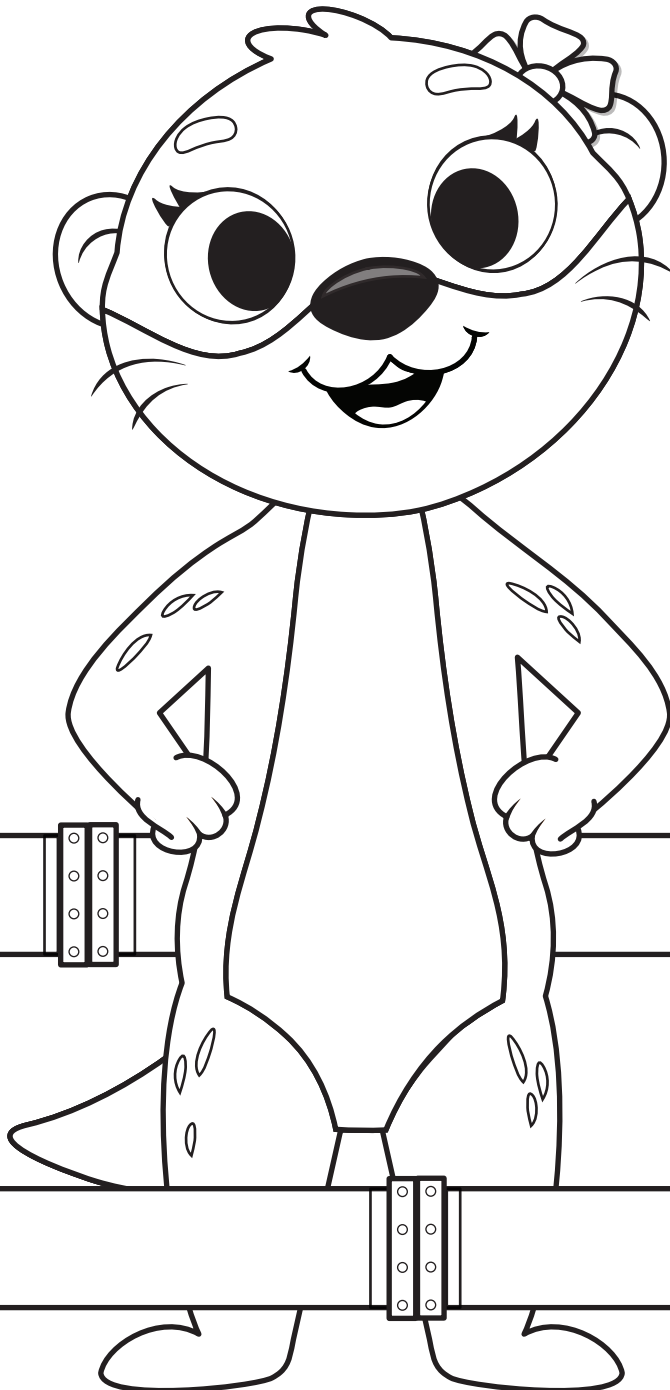
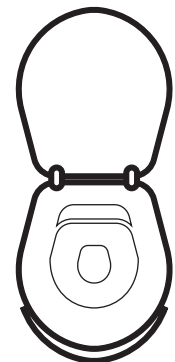
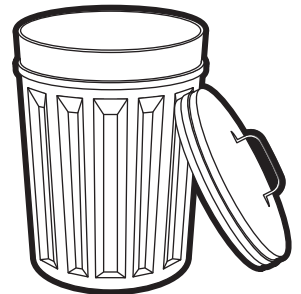
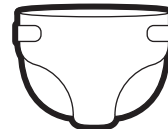
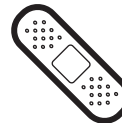
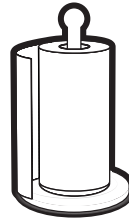


HOW CAN I HELP?

It's super important to **BE CAREFUL** about what we put down the drain. Things like food scraps, grease, and even wipes can cause big problems for our pipes.

When the pipes get clogged, it can make a big mess and be very hard to fix. By throwing trash in the garbage can and only putting waste from our body and toilet paper down the drain, we help keep everything running smoothly.

DRAW A LINE to toss the objects where they belong once we're done using them.



Our drinking water journey starts in the aquifer, far beneath our feet. From there, Lakeland's dedicated **WATER UTILITIES** team works hard to treat and deliver clean, reliable water right to your faucet. They're the protectors of this vital resource, making sure every drop is safe to use!

Take the Water Pledge and help protect it too!



OLLIE'S WATER PLEDGE

(NAME)

PLEDGES TO

- ☐ **TURN OFF THE WATER WHEN I BRUSH MY TEETH.**
- ☐ **MAKE SURE MY SHOWER IS LESS THAN 5 MINUTES.**
- ☐ **TURN OFF THE HOSE WHEN I'M DONE.**
- ☐ **TELL A GROWN-UP IF I NOTICE A LEAK.**
- ☐ **ONLY PUT TOILET PAPER AND HUMAN WASTE DOWN THE TOILET.**



Check your answers and keep learning at
LakelandGov.net/LearningLakeland