

LEARNING
Lakeland

FLORIDA NATIVES SCAVENGER HUNT



Wild Petunia

Reullia humilis

Clue: In gardens and fields,
my purple petals appear.
Bees love my trumpet
shape, buzzing near.

Pine Tree

Genus *Pinus*

Clue: I stand tall and
evergreen, with needles for
leaves and cones to be
seen.

Stoke's Aster

Stokesia laevis

Clue: I bloom in summer
with petals of lavender hue,
tall and proud, I reach for
the blue.

Bumble Bee

Genus *Bombus*

Clue: I buzz around from
flower to flower. With fuzzy
stripes of yellow and black
you see, I'm the worker bee.

Atala Butterfly

Eumaeus atala

Clue: I'm a creature of
beauty, with wings so
bright, black, red, and blue -
I'm quite the sight.

Coontie

Zamia integrifolia

Clue: I like the shade. I'm a
small cycad with leaves like
ferns displayed.

Silver Saw Palmetto

Serenoa repens

Clue: With fronds of silver
that make me look furry, in
the sandy soils is where I
stand, and I look quite
grand.

Black-eyed Susan

Rudbeckia hirta

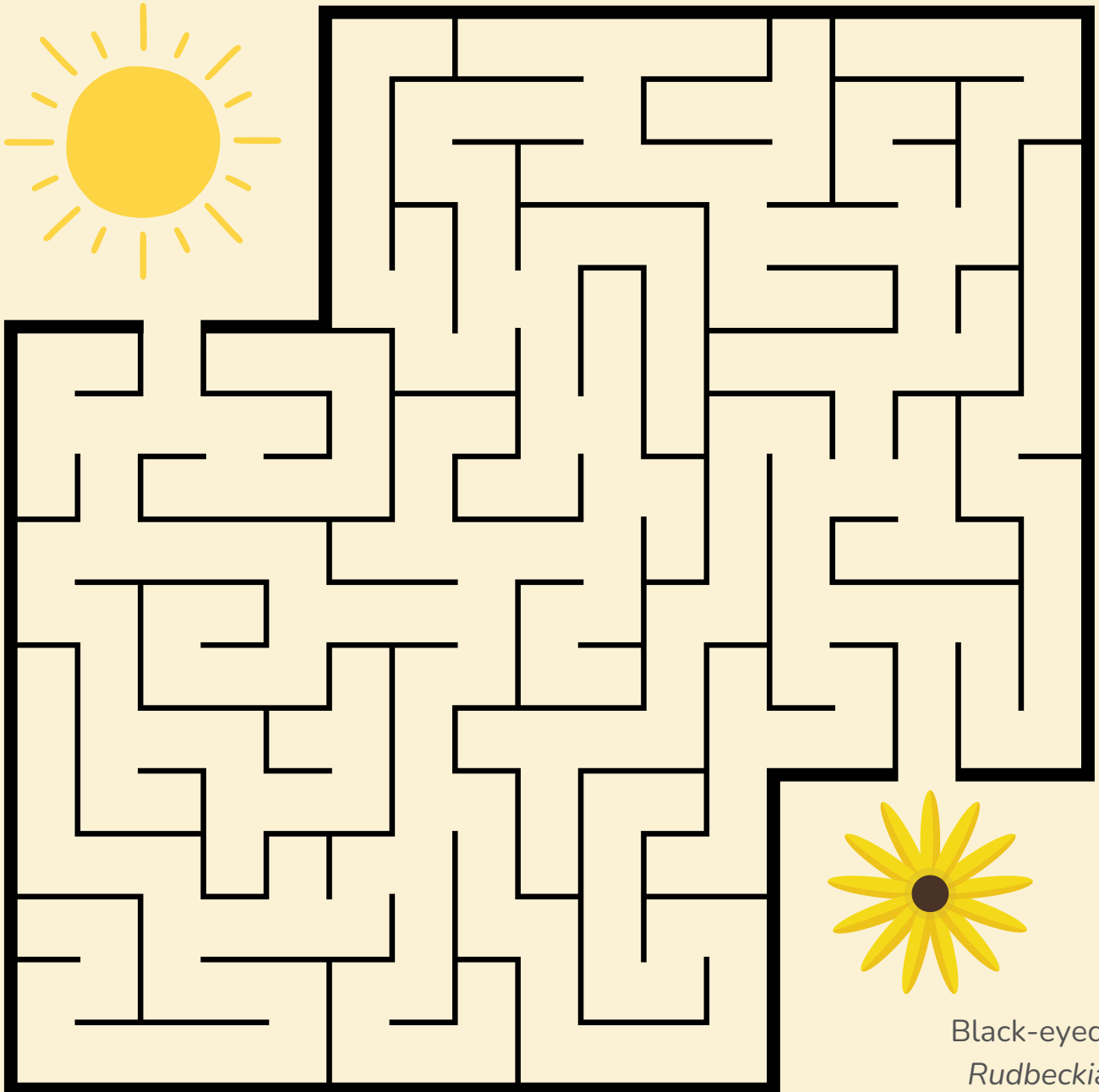
Clue: With petals like rays
and a dark center seen, I'm
a cheerful flower, not at all
mean.

LEARNING
Lakeland

FLORIDA NATIVES MAZE



Draw a line to help the Sun reach the plant!



Black-eyed Susan
Rudbeckia hirta

LEARNING
Lakeland

FLORIDA NATIVES

WORD SEARCH



C O O N T I E W J V A J E G Q A V B
N L I V E O A K Z E I E Y Y K J V E
C Q M U L C H V V K L R D T B V S E
E N A T I V E L D O R M A N T K B K
C Z H H O L L I S G A R D E N F Q H
I Q B H U M M I N G B I R D S G E A
Y P P Z L L W I L D P E T U N I A B
K T A T A L A B U T T E R F L Y F I
Q M U H L Y G R A S S Y C K A B E T
D V K B L O O M R H F O U V V E I A
I B A L D C Y P R E S S H K B S X T
D Q D B E A U T Y B E R R Y T D P J

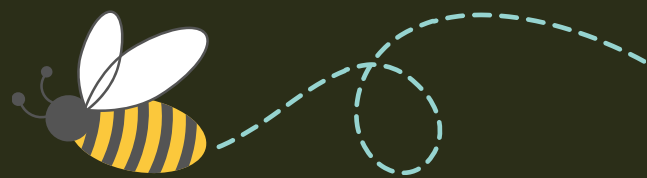
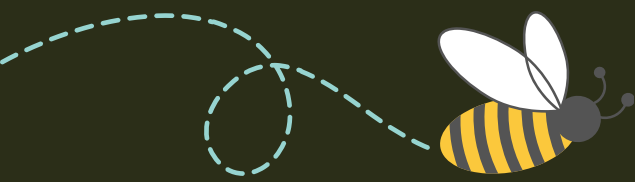
HOLLIS GARDEN
ATALA BUTTERFLY
BEE
HUMMINGBIRD
MULCH

NATIVE
DORMANT
BLOOM
HABITAT
BEAUTYBERRY

BALD CYPRESS
MUHLY GRASS
WILD PETUNIA
COONTIE
LIVE OAK

WORD SEARCH ANSWER KEY

C O O N T I E B
. L I V E O A K E
. . M U L C H E
. N A T I V E . D O R M A N T . . .
. . . H O L L I S G A R D E N . . H
. . . H U M M I N G B I R D . . . A
. W I L D P E T U N I A B
. . A T A L A B U T T E R F L Y . I
. M U H L Y G R A S S T
. . . B L O O M A
. B A L D C Y P R E S S T
. . . B E A U T Y B E R R Y



**LEARNING
Lakeland**

FLORIDA NATIVES

NATURE JOURNALING



WHY?



Appreciate Nature

- Engage in mindful observation
- Document progression
- Get creative

Plan Better

- Keep a historical record
- Learn from experience
- Improve techniques



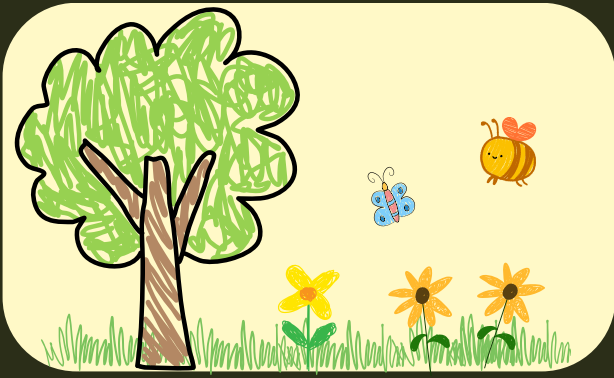
Record ideas

- Have ideas ready for the next season
- List tips and tricks to try

Nature journaling enhances kids observation skills while also sparking creativity and environmental stewardship.

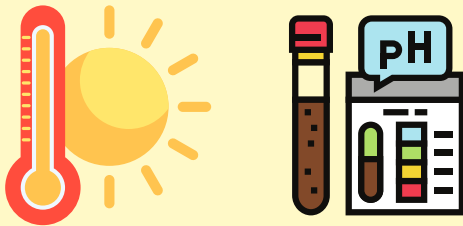


HOW?



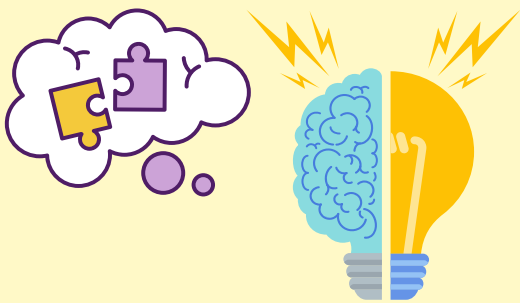
Write what you see:

- Pests, diseases, and symptoms
- Note when blooming
- Track sunlight exposure



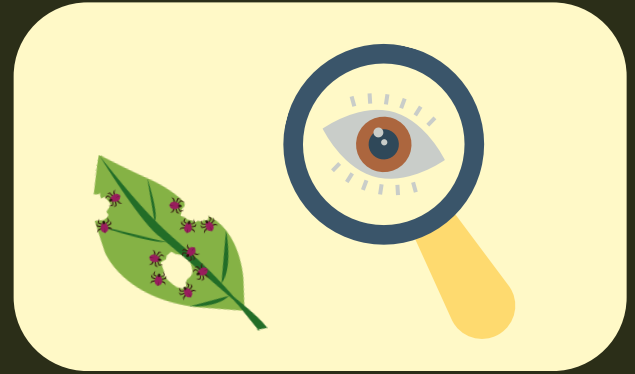
Create plant profiles:

- Note plant name
- Write down care requirements and notable characteristics



Sketching:

- Sketch garden layout and design ideas
- Sketch garden progress and plant growth



Write what you measure:

- Temperature and rainfall
- Plant growth
- Soil pH (as needed)

Plant Name: Swamp Sunflower
Adoption date: 10/28/2024
Sunlight: full sun preferred
Soil preferences: dry to wet
common pests: Spittle bugs & powdery mildew
Additional Notes: Blooms in fall

Add personal reflections:

- Celebrate successes and review challenges
- Write about experiences and emotions

Get creative! Make it fun by adding collages, pressed flowers, poetry, and more!



NOW THAT YOU'VE LEARNED ABOUT NATURE JOURNALING, HERE'S AN EXAMPLE!

Common Name: Scorpion Tail

Scientific Name: *Plectrotrichum angiospermum*

Date Planted: 10/28/2024

Purchased From: The Nectary

Plant Size: Up to ~3 ft

Non-Toxic to Humans
 Pet Friendly
 Native
 Container Friendly

Ideal Temp: 60-100°F

Humidity: moderate to high

Sunlight
 Full Sun Partial Light
 Full Shade Other:

Watering Needs

Daily None
 Weekly Other: every 9 days

Soil Preference

Soil Type: sandy limestone (dry well drains)

pH: alkaline/neutral (9.5-8)

Fertilizer

Type: TBD

Frequency: as needed during grow zen

Common Pests

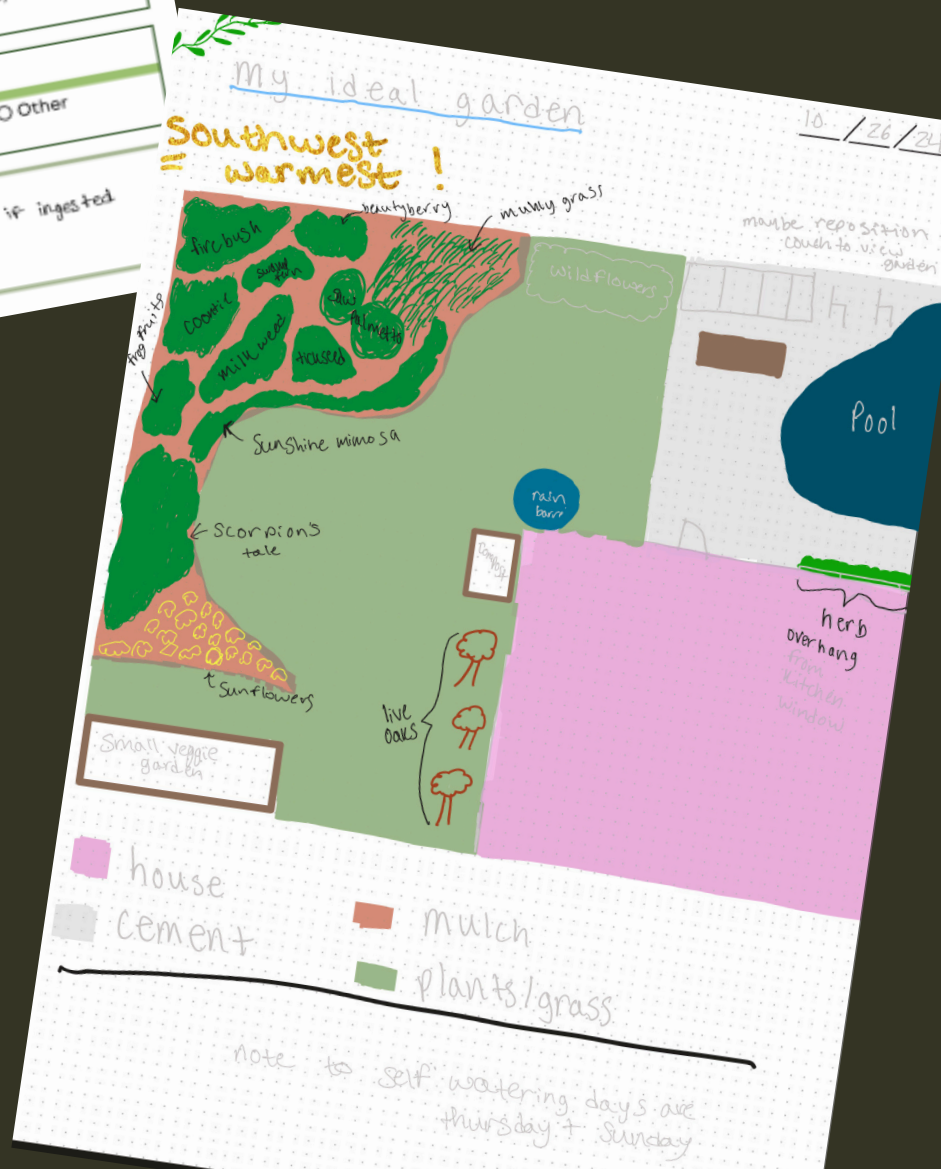
Spider mites, aphids, mealybugs

Attracts

Pollinators Other
 Birds

Additional Notes:

- dangerous if consumed, call poison control if ingested
- fast growing + self seeding
- white flowers always in bloom
- annual pruning



**NOW IT'S
YOUR TURN!**

**FEEL FREE TO PRINT THE
FOLLOWING PAGES,
OR TO USE THEM AS
INSPIRATION FOR YOUR
PERSONAL JOURNAL**

HAPPY JOURNALING!!!

Common Name:

Scientific Name:

Date Planted:

Purchased From:

Plant Size:

- Non-Toxic to Humans
- Pet Friendly
- Native
- Container Friendly

Ideal Temp:

Humidity:

ATTACH SEED BAG
AND/OR
PHOTO OF PLANT

 Sunlight

- Full Sun
- Partial Light
- Full Shade
- Other:

 Fertilizer

Type:
Frequency:

 Watering Needs

- Daily
- None
- Weekly
- Other:

Common Pests

 Soil Preference

Soil Type:
pH:

Attracts

- Pollinators
- Other
- Birds

Additional Notes:

