

**LEARNING
Lakeland**

FLORIDA NATIVES SCAVENGER HUNT



Wild Petunia

Reullia humilis

Clue: In gardens and fields,
my purple petals appear.
Bees love my trumpet
shape, buzzing near.

Pine Tree

Genus *Pinus*

Clue: I stand tall and
evergreen, with needles for
leaves and cones to be
seen.

Stoke's Aster

Stokesia laevis

Clue: I bloom in summer
with petals of lavender hue,
tall and proud, I reach for
the blue.

Bumble Bee

Genus *Bombus*

Clue: I buzz around from
flower to flower. With fuzzy
stripes of yellow and black
you see, I'm the worker bee.

Atala Butterfly

Eumaeus atala

Clue: I'm a creature of
beauty, with wings so bright,
black, red, and blue - I'm
quite the sight.

Coontie

Zamia integrifolia

Clue: I like the shade. I'm a
small cycad with leaves like
ferns displayed.

Silver Saw Palmetto

Serenoa repens

Clue: With fronds of silver
that make me look furry, in
the sandy soils is where I
stand, and I look quite
grand.

Black-eyed Susan

Rudbeckia hirta

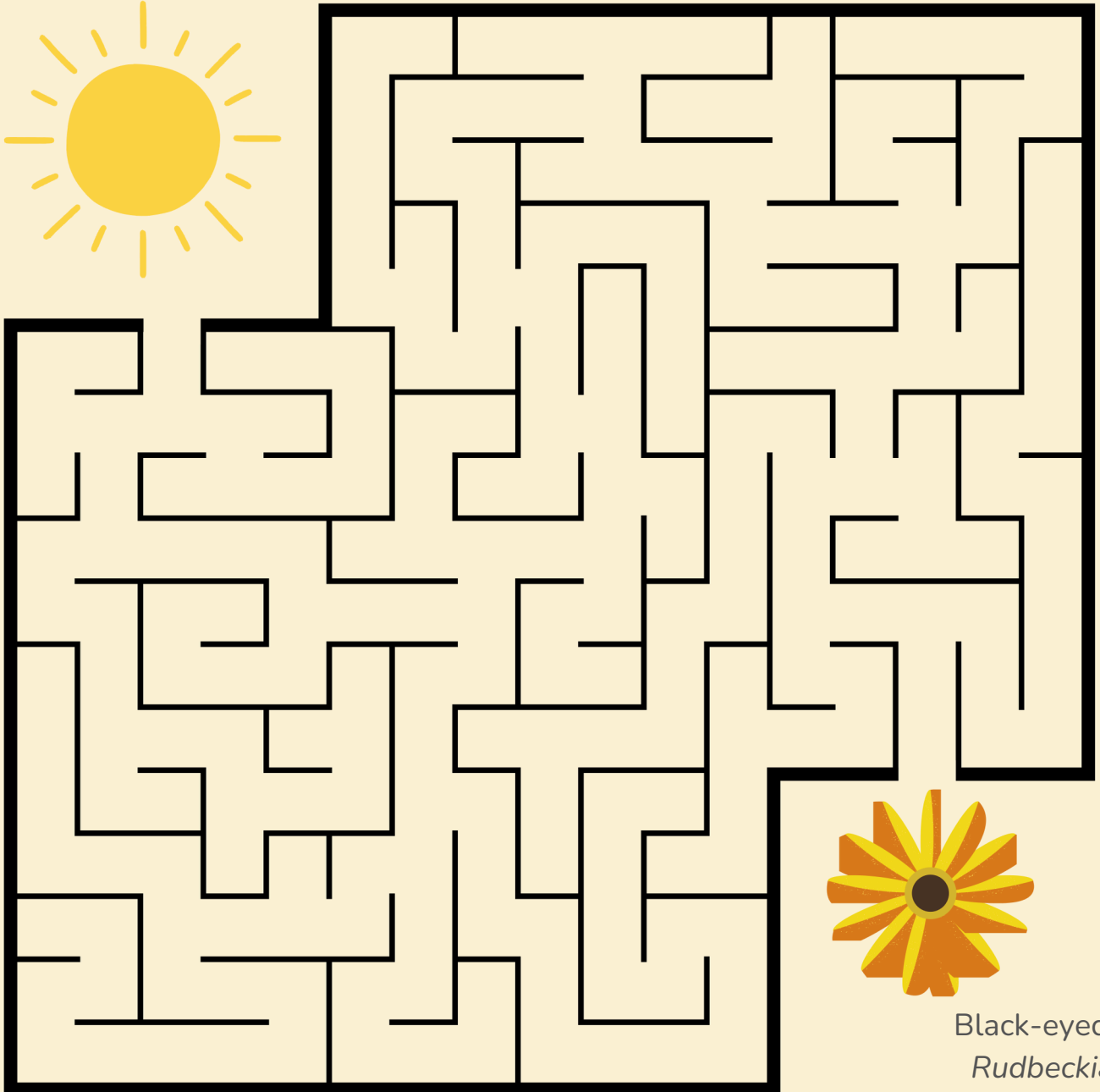
Clue: With petals like rays
and a dark center seen, I'm
a cheerful flower, not at all
mean.

LEARNING
Lakeland

FLORIDA NATIVES MAZE



Draw a line to help the Sun reach the plant!



Black-eyed Susan
Rudbeckia hirta

LEARNING
Lakeland

FLORIDA NATIVES

WORD SEARCH



C	O	O	N	T	I	E	W	J	V	A	J	E	G	Q	A	V	B
N	L	I	V	E	O	A	K	Z	E	I	E	Y	Y	K	J	V	E
C	Q	M	U	L	C	H	V	V	K	L	R	D	T	B	V	S	E
E	N	A	T	I	V	E	L	D	O	R	M	A	N	T	K	B	K
C	Z	H	H	O	L	L	I	S	G	A	R	D	E	N	F	Q	H
I	Q	B	H	U	M	M	I	N	G	B	I	R	D	S	G	E	A
Y	P	P	Z	L	L	W	I	L	D	P	E	T	U	N	I	A	B
K	T	A	T	A	L	A	B	U	T	T	E	R	F	L	Y	F	I
Q	M	U	H	L	Y	G	R	A	S	S	Y	C	K	A	B	E	T
D	V	K	B	L	O	O	M	R	H	F	O	U	V	V	E	I	A
I	B	A	L	D	C	Y	P	R	E	S	S	H	K	B	S	X	T
D	Q	D	B	E	A	U	T	Y	B	E	R	R	Y	T	D	P	J

HOLLIS GARDEN
ATALA BUTTERFLY
BEE
HUMMINGBIRD
MULCH

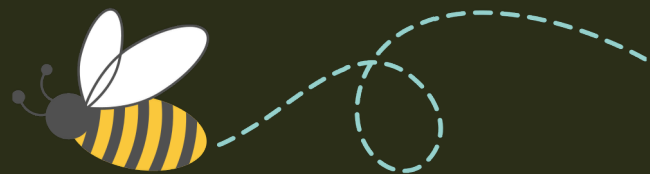
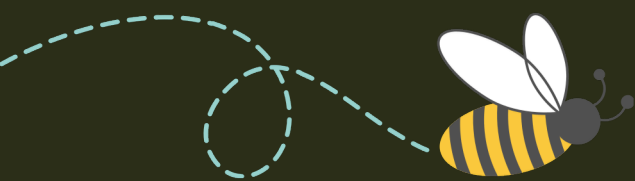
NATIVE
DORMANT
BLOOM
HABITAT
BEAUTYBERRY

BALD CYPRESS
MUHLY GRASS
WILD PETUNIA
COONTIE
LIVE OAK

WORD SEARCH

ANSWER KEY

C	O	O	N	T	I	E	B
.	L	I	V	E	O	A	K	E
.	.	M	U	L	C	H	E
.	N	A	T	I	V	E	.	D	O	R	M	A	N	T	.	.
.	.	.	H	O	L	L	I	S	G	A	R	D	E	N	.	H
.	.	.	H	U	M	M	I	N	G	B	I	R	D	.	.	A
.	W	I	L	D	P	E	T	U	N	I	A
.	.	A	T	A	L	A	B	U	T	T	E	R	F	L	Y	.
.	M	U	H	L	Y	G	R	A	S	S	T
.	.	.	B	L	O	O	M	A
.	B	A	L	D	C	Y	P	R	E	S	S	T
.	.	.	B	E	A	U	T	Y	B	E	R	R	Y	.	.	.



**LEARNING
Lakeland**

FLORIDA NATIVES

NATURE JOURNALING



WHY?



Appreciate Nature

- Engage in mindful observation
- Document progression
- Get creative

Plan Better

- Keep a historical record
- Learn from experience
- Improve techniques



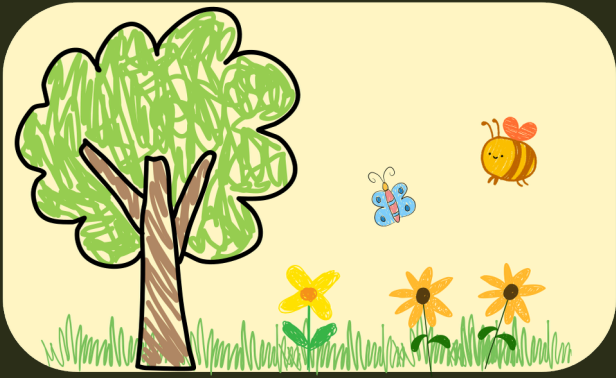
Record ideas

- Have ideas ready for the next season
- List tips and tricks to try

Nature journaling enhances kids observation skills while also sparking creativity and environmental stewardship.

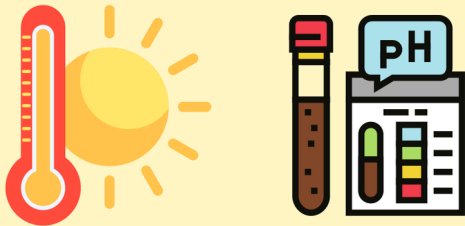


HOW?



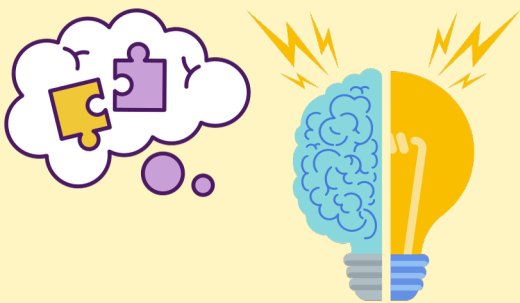
Write what you see:

- Pests, diseases, and symptoms
- Note when blooming
- Track sunlight exposure



Create plant profiles:

- Note plant name
- Write down care requirements and characteristics



Sketching:

- Sketch garden layout and design ideas
- Sketch garden progress and plant growth



Write what you measure:

- Temperature and rainfall
- Plant growth
- Soil pH (as needed)

Plant Name: Swamp
Sunflower Adoption date:
10/28/2024 Sunlight: full sun
preferred Soil preferences:
dry to wet common pests:
Spittle bugs & powdery
mildew Additional Notes:
Blooms in fall

Add personal reflections:

- Celebrate successes and review challenges
- Write about experiences and emotions

Get creative! Make it fun by adding collages, pressed flowers, poetry, and more!



JOURNALING, HERE'S AN EXAMPLE

Common Name: Scorpion Tail

Scientific Name: *Peliotrochium angiospermum*

Date Planted: 10/28/2024

Purchased From: The Nursery

Plant Size: Up to ~3 ft

☐ Non-Toxic to Humans
☐ Pet Friendly
☒ Native
☐ Container Friendly

Ideal Temp: 60-100°F

Humidity: Moderate to high

☒ Sunlight
☒ Full Sun + some ☒ Partial Light
☐ Full Shade ☐ Other:

☒ Watering Needs
☐ Daily ☐ None
☐ Weekly ☒ Other: every 9 days

☒ Soil Preference
 Soil Type: sandy limestone
 pH: alkaline/neutral (7.5-8) (drift well drained)

☒ Fertilizer
 Type: TBD
 Frequency: as needed during grow season

Common Pests
 spider mites, aphids, mealybugs

Attracts
☒ Pollinators ☐ Other
☒ Birds

Additional Notes:
 - dangerous if consumed, call poison control if ingested
 - fast growing + self seeding
 - white flowers always in bloom 
 - annual pruning





NOW IT'S YOUR TURN!

**FEEL FREE TO PRINT THE
FOLLOWING PAGES,
OR TO USE THEM AS
INSPIRATION FOR YOUR
PERSONAL JOURNAL
HAPPY JOURNALING!!!**

Common Name:

Scientific Name:

Date Planted:

Purchased From:

Plant Size:

☐ Non-Toxic to Humans

☐ Pet Friendly

☐ Native

☐ Container Friendly

Ideal Temp:

Humidity:

ATTACH SEED BAG
AND/OR
PHOTO OF PLANT



Sunlight

☐ Full Sun

☐ Partial Light

☐ Full Shade

☐ Other:



Fertilizer

Type:

Frequency:



Watering Needs

☐ Daily

☐ None

☐ Weekly

☐ Other:

Common Pests



Soil Preference

Soil Type:

pH:

Attracts

☐ Pollinators

☐ Other

☐ Birds

Additional Notes:



