



# LAKELAND FIRE DEPARTMENT

**Media Release**

FOR IMMEDIATE RELEASE

Date: March 11, 2015

Contact: Janel Vasallo, Public Information / Education Officer

Telephone: (863) 834-8219

Cell: (863) 860-9011

Email: [janel.vasallo@lakelandgov.net](mailto:janel.vasallo@lakelandgov.net)

## **Vehicle Extrication on Kathleen Road Due. Wet Road Conditions a Possible Factor**

Lakeland, FL – At approximately 10:45 PM on Wednesday, March 11, 2015 the Lakeland Fire Department responded to a single vehicle accident near 1100 Kathleen Rd. The vehicle lost control on the wet road and struck a palm tree on the divided highway (see attached pictures).

The driver and passenger were severely injured, with the passenger becoming entrapped due the passenger-side door pinning their right leg. The palm tree that the vehicle struck further complicated the situation, not allowing for the door that was creating the entrapment to be removed. The passenger was removed through extensive extrication efforts carried out by the department's Tactical Rescue Technicians, who had to remove the dashboard and roof of the vehicle to free the patient. The extrication took a total of 38 minutes to complete.

Both the driver and passenger were packaged for medical transport by LFD Paramedics and the patients were transported by Polk County Fire Rescue to the Lakeland Regional Medical Center. Both the driver and passenger were Trauma Alert patients due to the severity of their injuries.

This serves as a sobering reminder to all drivers to please use extreme caution when driving on wet roads.

4 Apparatus and 9 Personnel from the Lakeland Fire Department were on scene.

The scene was cleared by LFD by 11:47 PM.

- END -

Gary Ballard, Fire Chief

701 E. Main Street Lakeland, FL 33801 | Phone (863)834-8200 | Fax (863)834-8295

[WWW.LAKELANDGOV.NET/LFD](http://WWW.LAKELANDGOV.NET/LFD)



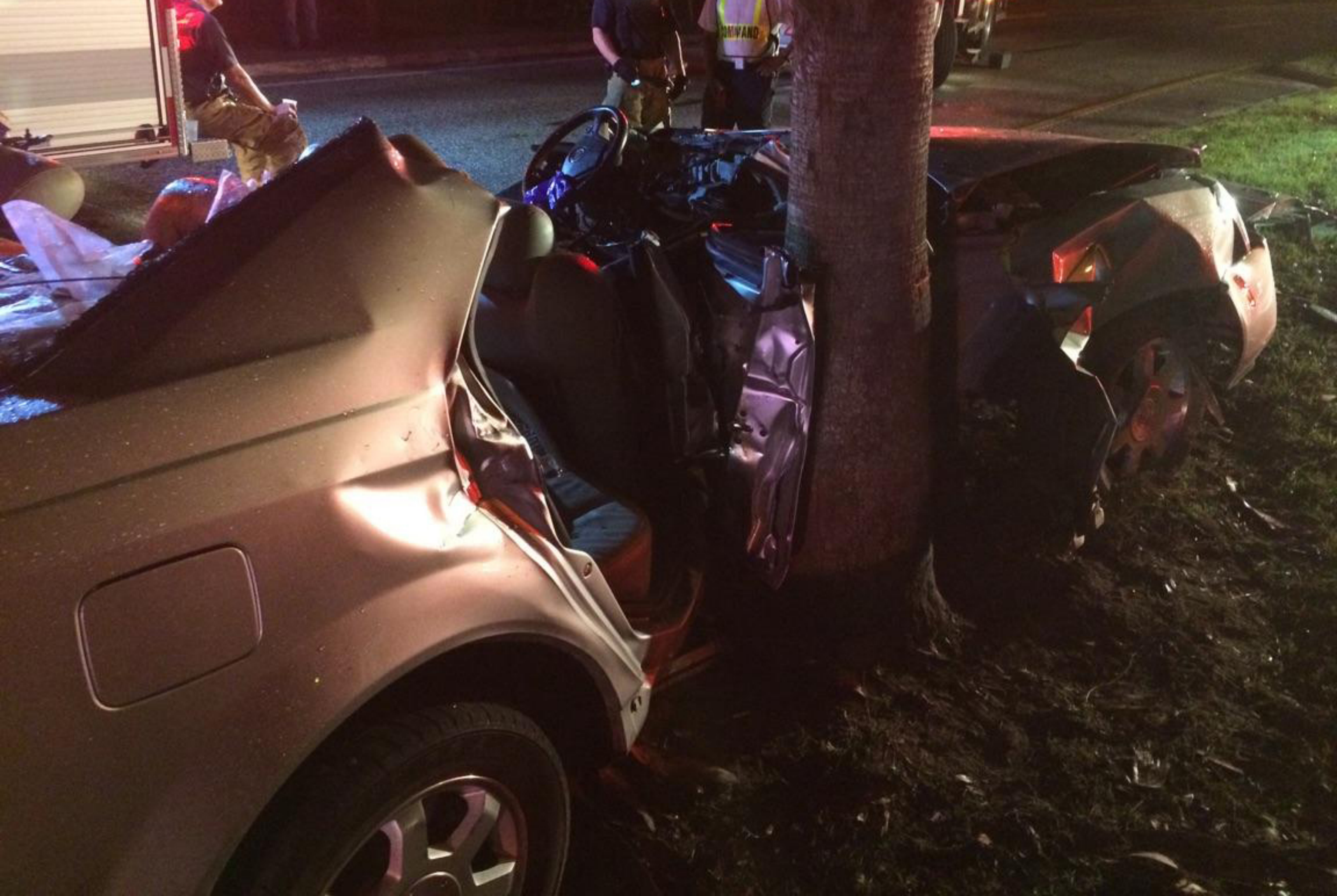
/LakelandFD



@LakelandFD









1 RESCUE 4

POL

CITY OF LANDLAK  
FIRE DEPARTMENT

